

FUSRAP MAYWOOD SUPERFUND SITE

CALL BEFORE DIGGING IN THESE AREAS

Areas on figures are approximate

(201) 909-0023

Figure Number and Name

1 - New Jersey Route 17
1 - Williams-TransCo Natural Gas Pipeline
2 - W. Hunter Avenue
3 - Interstate 80
4 - Branca Court
5 - Redstone Lane**
6 - Trudy Drive
7 - Hancock Street North
7 - Hancock Street/Brook Street
8 - Money Street
9 - Columbia Lane
10 - Garibaldi Ave
11 - U.S. Route 46
12 - Industrial Road and Pump House

Area of Concern Begins (address)

At NJ Rt 17 at Central Avenue
At NJ Rt 17 at Central Avenue
At 100 W. Hunter Avenue
At I-80 and Long Valley Road
Remediation Complete
Remediation Complete
Remediation Complete
At Redstone Park
Intersection of Brook St and Garibaldi Ave
At Mitchell Street
Remediation Complete
At Brook Street
All of US Route 46
Remediation Complete

Area of Concern Ends (address)

At NJ Rt 17 at 99 Essex Street
At NJ Rt 17 at 99 Essex Street
At 60 W Hunter Avenue
At I-80 and 178 Essex Street
Remediation Complete
Remediation Complete
Remediation Complete
At Industrial Road
Intersection of Brook St and Garibaldi Ave
At Sidney Street
Remediation Complete
At 99 Garibaldi Ave
All of US Route 46
Remediation Complete

**Remediation at the Redstone Lane RPI is complete. Remediation on the adjacent pump station utility is still necessary and is reflected on Figure 5 (Redstone Lane).



Figure 1 – New Jersey Route 17 and Williams-TransCo Natural Gas Pipeline



Figure 2 – West Hunter Avenue



Figure 3 – Interstate 80



Figure 5 – Redstone Lane

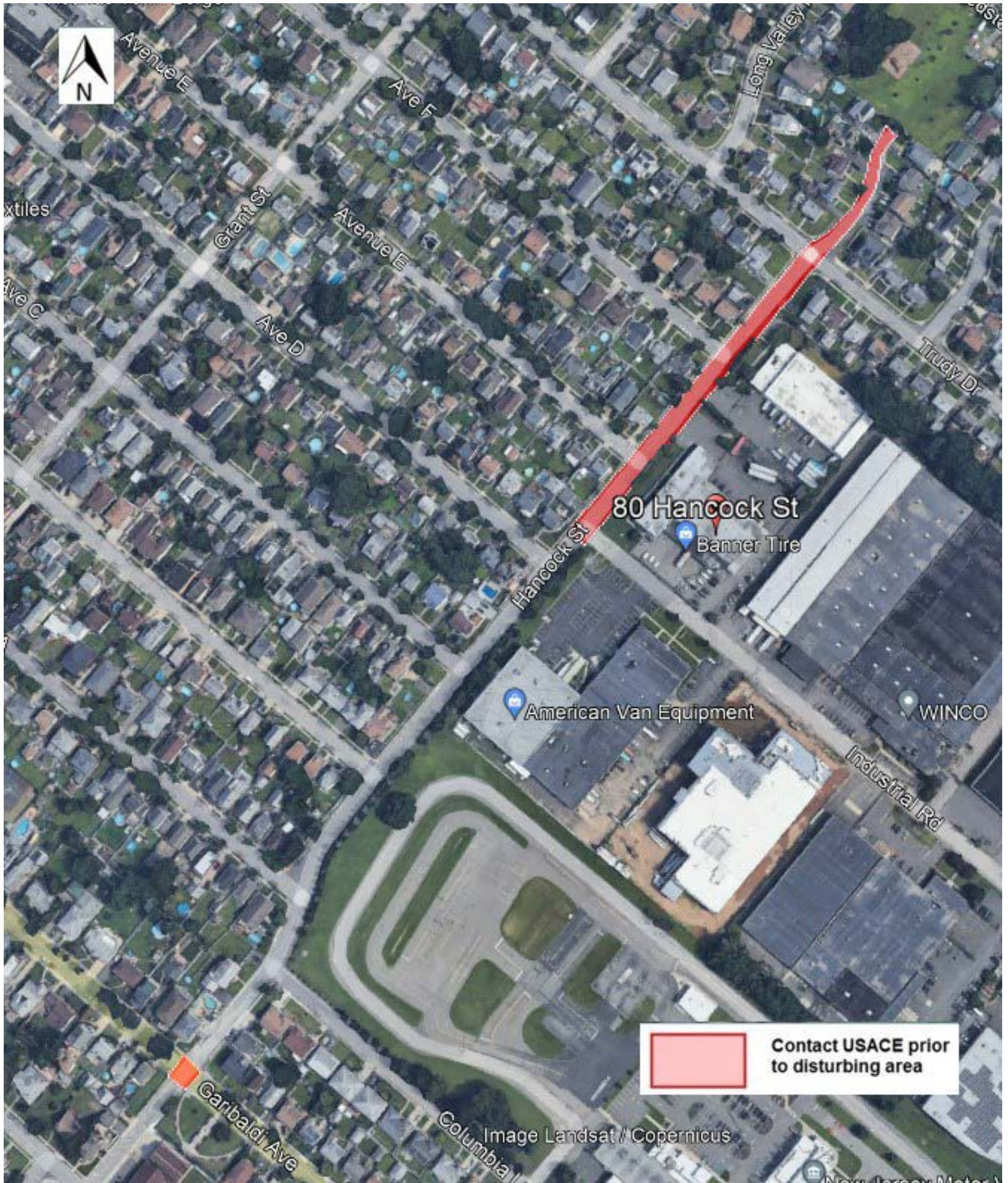


Figure 7 – Hancock Street North, Hancock Street/Brook Street



Figure 8 – Money Street



Figure 10 – Garibaldi Avenue



Figure 11 – U.S. Route 46